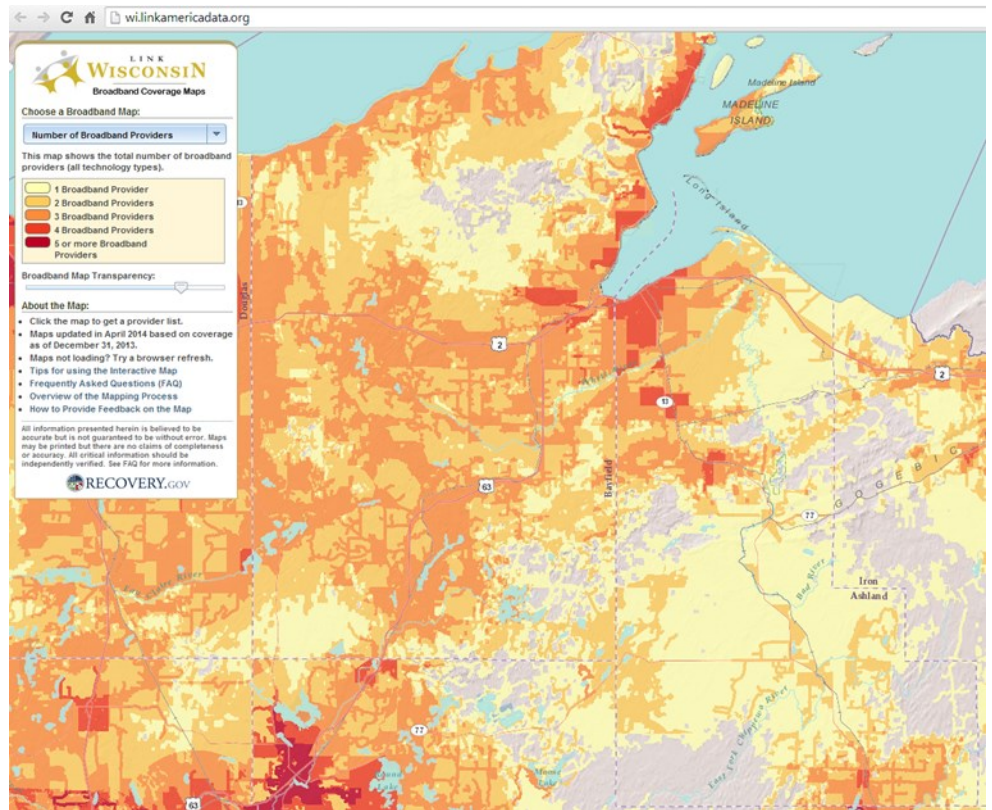


Family Living and Community Resource Development partnered this year on several projects aimed at improving Broadband (High Speed Internet) availability and usage in our region. This map shows the limited availability of broadband while other maps from Link Wisconsin dramatically show the problem of limited speeds in much of our county. One effort to address these issues was a Broadband Show at WITC that our planning team sponsored. We partnered with area economic development directors, WITC and the Broadband and E-Commerce center. The event featured 15 area providers, a dozen presenters and was attended by 180 area citizens.



Broadband Efforts of 2014
from the UW-Extension Ashland
County 2014 Annual Report

Displays at Broadband Show.



Another activity related to Broadband was a half-day training for area businesses. Twenty-four Ashland and Bayfield county business owners or staff participated in a program that included: strategic networks digital business scorecard; web site basics; search engine optimization; search engine marketing; social media; e-commerce; and use of a business assessment tool.