

## Winter Farmer Forum – Panel #2



## Background Info

- Pleasantville Area
- Dairy & Beef – 2005
- Beef Cow / Calf operation expanded
- Fed Cattle
- Corn, Soybeans, Rye, Alfalfa, Grass, and Pasture
- About 1900 acres

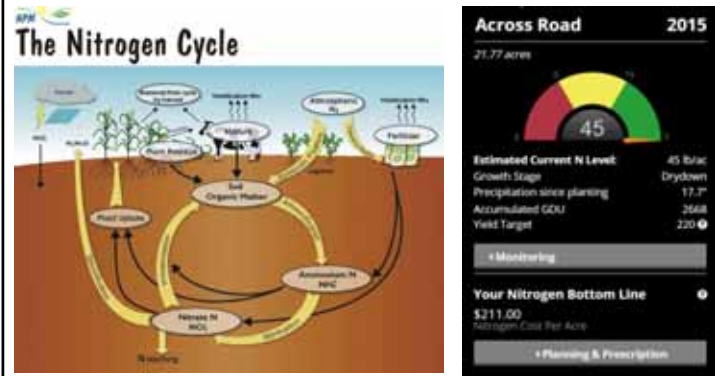


## What we did in 2016

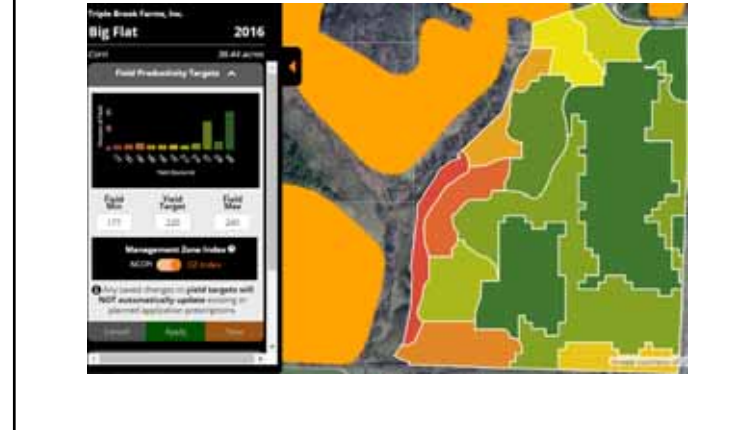
- Use Modern Technology to guide Nitrogen Applications
  - Variable Rate
  - Encirca N
- Increase Profitability
  - Reduced N application rates
  - Increase Yield
  - Increase N efficiency



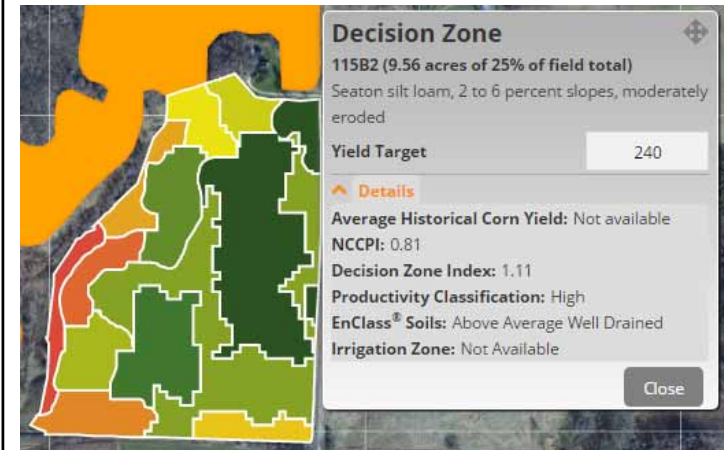
## Real Time Nitrogen Availability



## SideDress Application



## Yield Zones



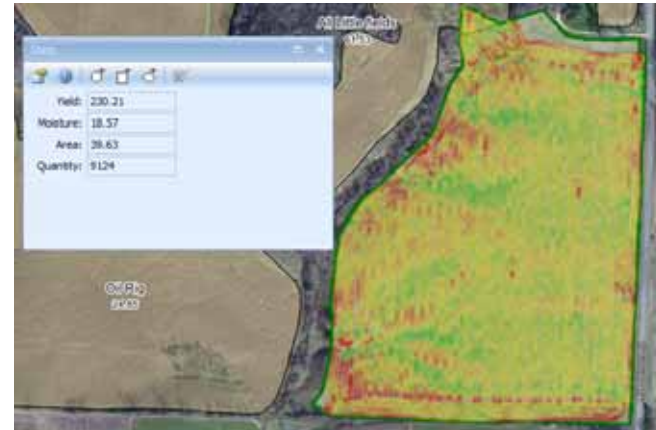
## Nitrogen Model



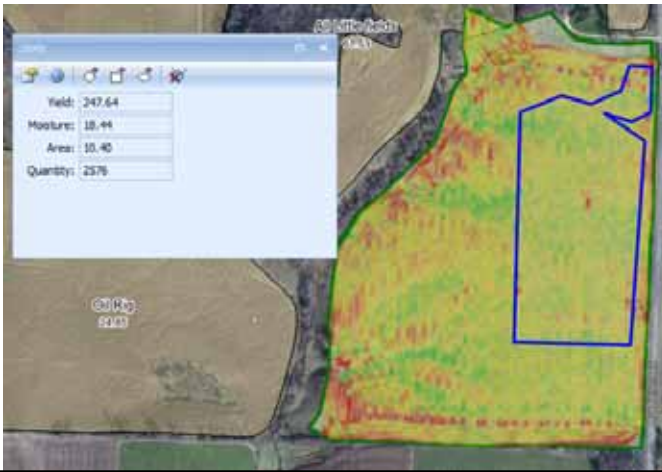
### Side Dress Application



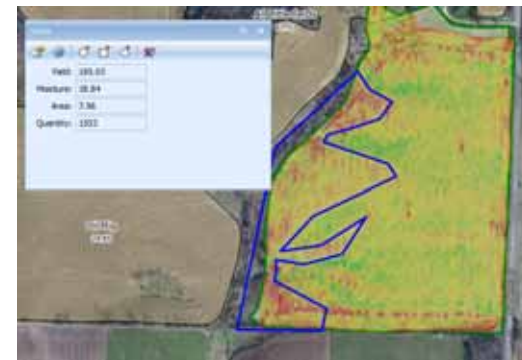
### Whole Farm Yield



### Yield Data



### Low End Yield



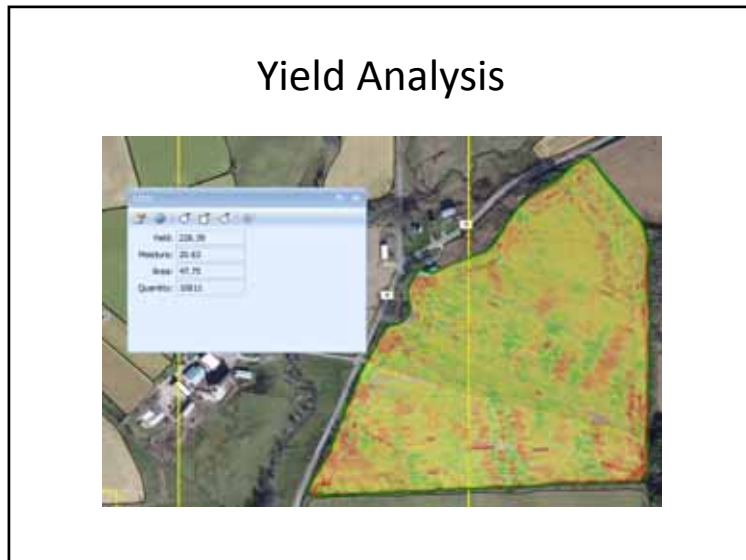
### Yield Goals



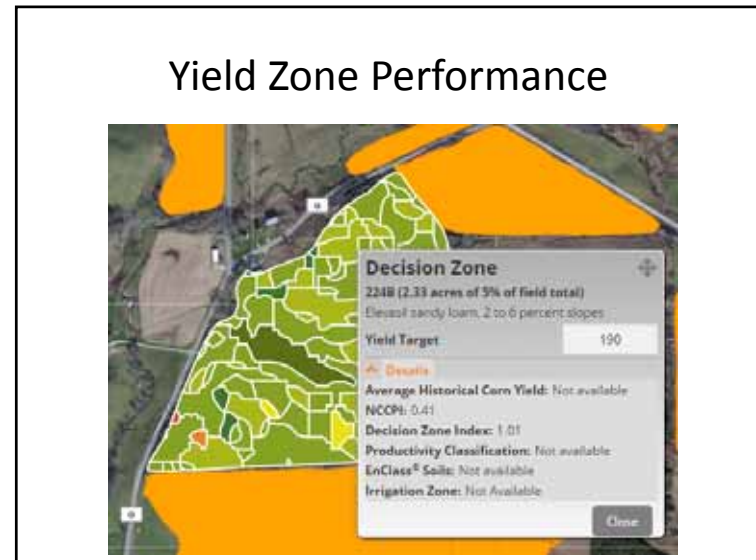
### Nitrogen Plan



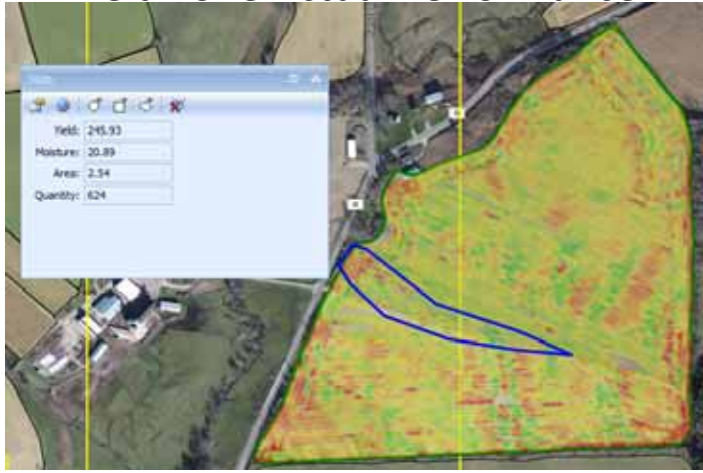
### Yield Analysis



### Yield Zone Performance



### Yield Zone Actual Performance



### 2017 Plans

- Continue with Elk Creek Watershed Nitrogen Use Efficiency Study
- Implement Encirca N again
- VR apply Nitrogen on Side Dress acres at least

